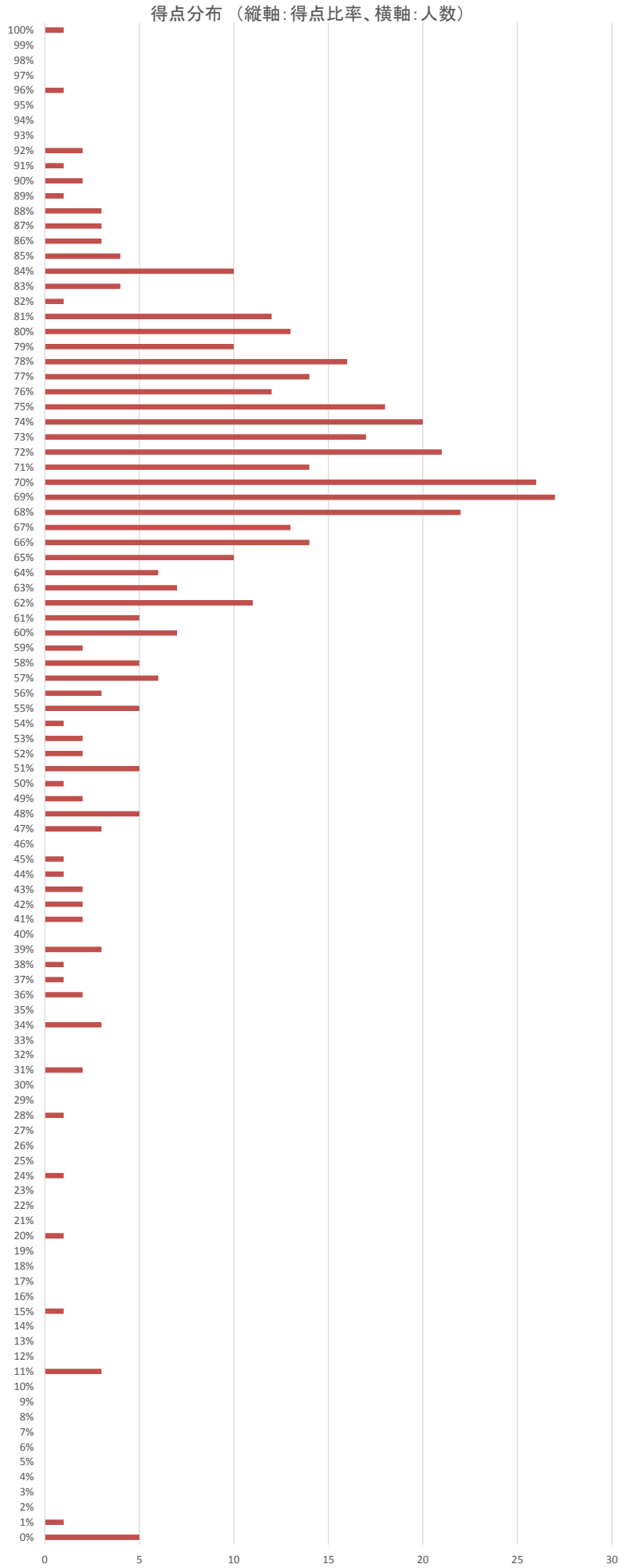


【東京CPA会計学院 平成30年 第I回 短答式試験 WEBサーベイ 得点分布表】

得点比率	人数	構成比率	累計人数	構成比率
100%	1	0.2%	1	0.2%
99%			1	0.2%
98%			1	0.2%
97%			1	0.2%
96%	1	0.2%	2	0.5%
95%			2	0.5%
94%			2	0.5%
93%			2	0.5%
92%	2	0.5%	4	0.9%
91%	1	0.2%	5	1.2%
90%	2	0.5%	7	1.6%
89%	1	0.2%	8	1.9%
88%	3	0.7%	11	2.6%
87%	3	0.7%	14	3.3%
86%	3	0.7%	17	4.0%
85%	4	0.9%	21	4.9%
84%	10	2.3%	31	7.3%
83%	4	0.9%	35	8.2%
82%	1	0.2%	36	8.5%
81%	12	2.8%	48	11.3%
80%	13	3.1%	61	14.3%
79%	10	2.3%	71	16.7%
78%	16	3.8%	87	20.4%
77%	14	3.3%	101	23.7%
76%	12	2.8%	113	26.5%
75%	18	4.2%	131	30.8%
74%	20	4.7%	151	35.4%
73%	17	4.0%	168	39.4%
72%	21	4.9%	189	44.4%
71%	14	3.3%	203	47.7%
70%	26	6.1%	229	53.8%
69%	27	6.3%	256	60.1%
68%	22	5.2%	278	65.3%
67%	13	3.1%	291	68.3%
66%	14	3.3%	305	71.6%
65%	10	2.3%	315	73.9%
64%	6	1.4%	321	75.4%
63%	7	1.6%	328	77.0%
62%	11	2.6%	339	79.6%
61%	5	1.2%	344	80.8%
60%	7	1.6%	351	82.4%
59%	2	0.5%	353	82.9%
58%	5	1.2%	358	84.0%
57%	6	1.4%	364	85.4%
56%	3	0.7%	367	86.2%
55%	5	1.2%	372	87.3%
54%	1	0.2%	373	87.6%
53%	2	0.5%	375	88.0%
52%	2	0.5%	377	88.5%
51%	5	1.2%	382	89.7%
50%	1	0.2%	383	89.9%
49%	2	0.5%	385	90.4%
48%	5	1.2%	390	91.5%
47%	3	0.7%	393	92.3%
46%			393	92.3%
45%	1	0.2%	394	92.5%
44%	1	0.2%	395	92.7%
43%	2	0.5%	397	93.2%
42%	2	0.5%	399	93.7%
41%	2	0.5%	401	94.1%
40%			401	94.1%
39%	3	0.7%	404	94.8%
38%	1	0.2%	405	95.1%
37%	1	0.2%	406	95.3%
36%	2	0.5%	408	95.8%
35%			408	95.8%
34%	3	0.7%	411	96.5%
33%			411	96.5%
32%			411	96.5%
31%	2	0.5%	413	96.9%
30%			413	96.9%
29%			413	96.9%
28%	1	0.2%	414	97.2%
27%			414	97.2%
26%			414	97.2%
25%			414	97.2%
24%	1	0.2%	415	97.4%
23%			415	97.4%
22%			415	97.4%
21%			415	97.4%
20%	1	0.2%	416	97.7%
19%			416	97.7%
18%			416	97.7%
17%			416	97.7%
16%			416	97.7%
15%	1	0.2%	417	97.9%
14%			417	97.9%
13%			417	97.9%
12%			417	97.9%
11%	3	0.7%	420	98.6%
10%			420	98.6%
9%			420	98.6%
8%			420	98.6%
7%			420	98.6%
6%			420	98.6%
5%			420	98.6%
4%			420	98.6%
3%			420	98.6%
2%			420	98.6%
1%	1	0.2%	421	98.8%
0%	5	1.2%	426	100.0%
合計	426	100%		



	企業法	管理会計論	監査論	財務会計論			総合
				計算	理論	合計	
平均点	70.95点	66.55点	76.54点	77.59点	46.53点	124.12点	338.16点
平均得点比率(%)	70.95%	66.55%	76.54%	64.66%	58.16%	62.06%	67.63%